

ALEXANDRA HOSPITAL HEALTHCARE

01



The Alexandra Hospital in Redditch is run by Worcestershire Acute Hospitals NHS Trust. The hospital in Redditch was opened in 1985. It serves a population of approximately 200,000. With over 300 beds and eight operating theatres, the hospital is the county's hub for urology service and has an education centre.

LOCATION
REDDITCH

CLIENT
**WORCESTERSHIRE ACUTE
HOSPITALS NHS TRUST**

TIMESCALE
6 MONTHS

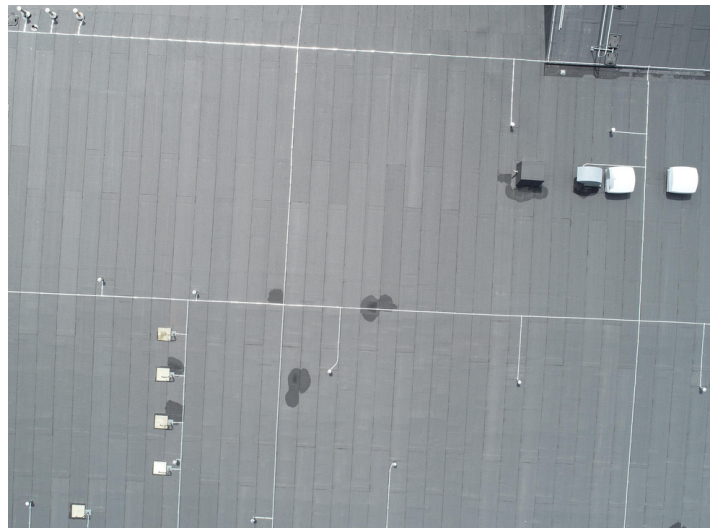
BUDGET
£610K

SIZE
3,437m²



CentralGroup
ROOFING & BUILDING SOLUTIONS

www.centralroofing.co.uk



Approach

The Central team recently stripped back two existing roofs with a combined size of 3,437m² and then installed a new 25-year guaranteed BMI Icopal Reinforced Bitumen Membrane System.

Other work included:

- New outlets and rainwater goods installed and checked
- 2 Pro-Guard Freestanding guardrails with fixings and access gates
- A specialist lightning protection system

David Alden, Director said "Not only has this been an inspiring project to oversee, but one that is incredibly important to the community in which it serves. Both my children were born at this hospital and required special neonatal care, so I really appreciate the importance of the building!"